



www.airlink-ilife.com

4G/3G IP camera Hardware Install Quick Start Guide

1.1 Camera packaging



Packaging contents

- 1) Camera body *1
- 2) Power adapter*1
- 3) Screws bag*1
- 4) Software disk*1
- 5) User manual*1
- 6) Antenna*1 or 2 or 3

1.2 Interference



V18.1A

Quick Start Guide

Contact Info: sales@airlinkwifi.net

2.1 Install the Micro SD card and SIM card

2.1 Remove screws from the housing cover



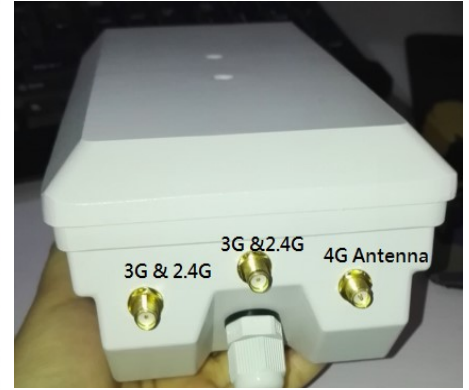
1)



2)



3)



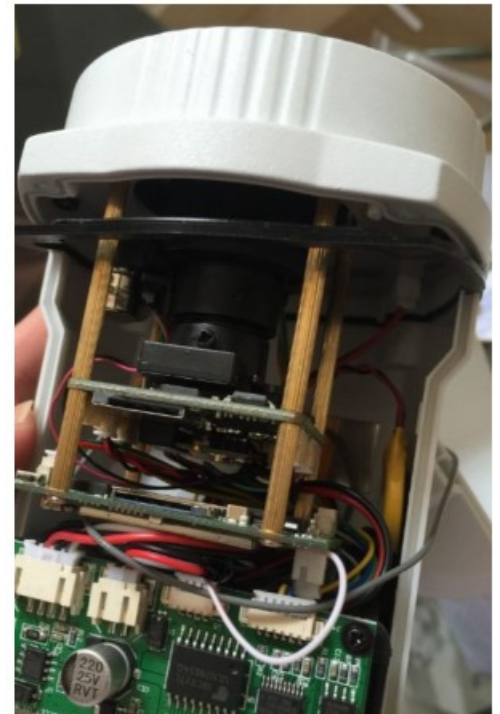
4) Antenna positions



1)

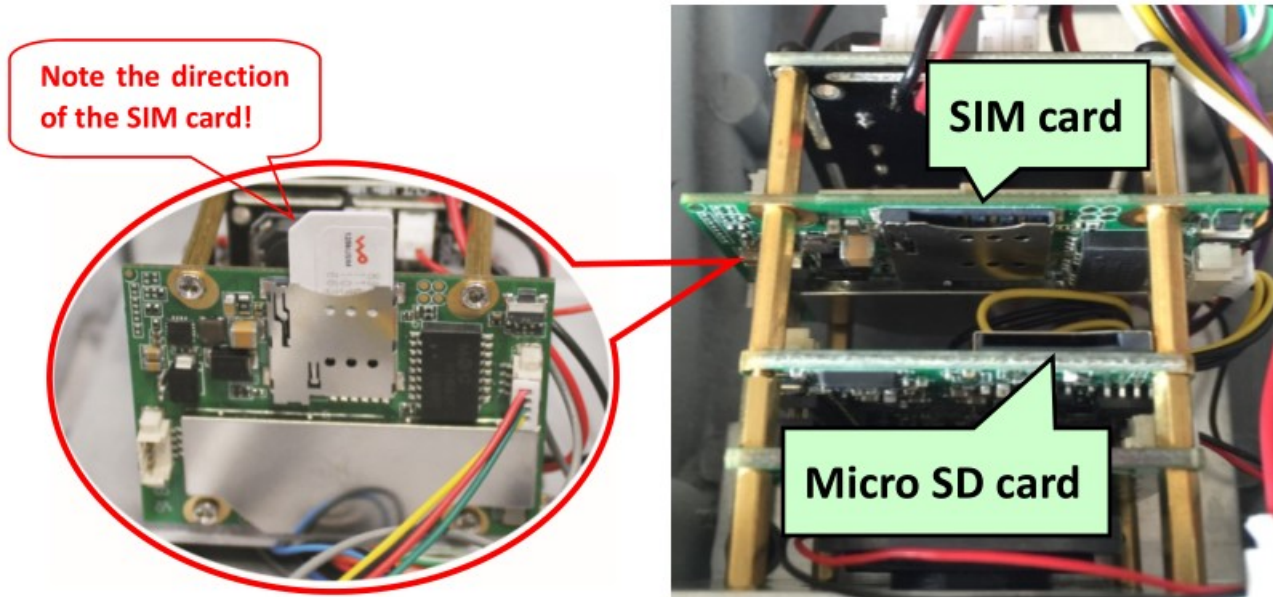


2)



3)

2.2 Insert the Micro SD card and SIM card



- I. SIM card size type is Micro Sim 12mmx15mmx0.8mm
- II. Please note the direction of SIM card installation!
- III. Hot swapping is not supported.
- IV. Micro SD card support max 128G

2.3 Connect power adaptor and antenna



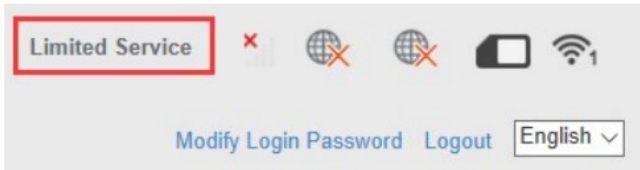
2.4 IE default IP address: 192.168.1.101

5. Frequency questions

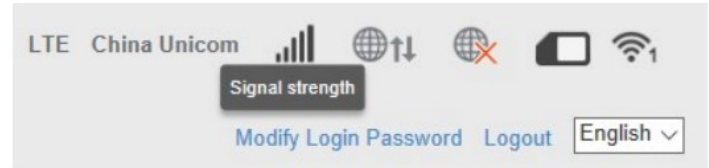
Why my 4G camera is offline?

A: 1. Please make sure insert of the sim card in correct position.

2. Double make sure your sim card not invalid, please insert your sim card into your 4G smart phone make sure in good signal of your area and under with your local provider service



Out service



Good signal

Thank you for read our quick start guide, more details please read user manual in CD. If you need our support please send email to us at support@airlinkwifi.net